

# creative icon™ 2

## Speech Recognition Setup - Amazon Alexa

### Important Information!

Speech Recognition for your creative icon 2 sewing and embroidery machine is currently only available in English for Amazon Alexa.

The instructions below are general descriptions and include third-party suppliers. Availability, procedure and functionality are subject to change or variation.

### Get Started with Speech Recognition

Getting Alexa to cooperate with your Wi-Fi, Bluetooth or devices can sometimes be a hassle. With the following instructions we will try to guide you smoothly through the process.

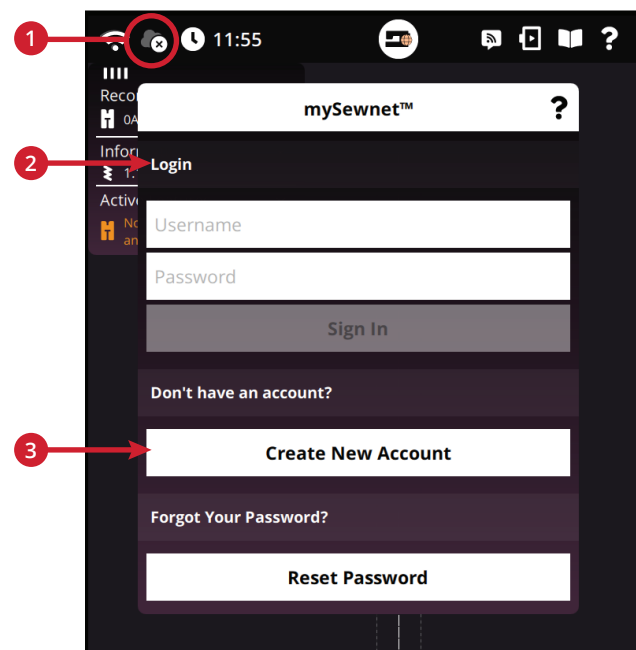
The steps described might vary depending on what smart device and software release you are using and whether or not you are/have been connected to the Amazon Alexa app or device before.

If you experience problems with your Alexa Setup, please visit the Alexa support web site.

### On Your creative icon 2

- Turn on your creative icon 2, connect it to your WiFi by touching the wifi icon in the upper left corner of the machine screen. Enter the wifi password.
- Touch the mySewnet cloud icon (1) to login to your mySewnet account (2). If you do not have a mySewnet account, you must create one (3).

*Note: You can also create your account on [www.mysewnet.com](http://www.mysewnet.com).*



## On your Smart Device



- Download/open the Alexa app.
- Create an Amazon Alexa account, or login to your existing Amazon Alexa account.

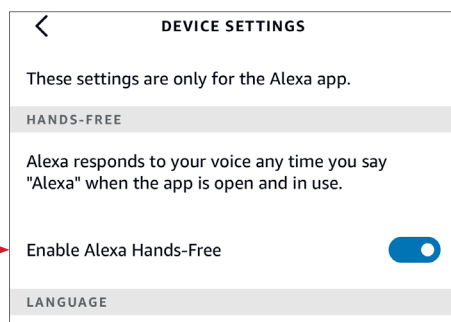
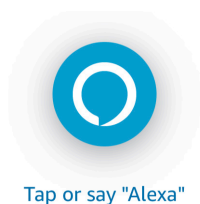
**IMPORTANT!** Make sure you are connected to the same wifi as your mySewnet account.

If you login to the Alexa app for the first time or when you create an account, you are asked to do certain settings such as make voice ID settings and give access to blue tooth and your microphone.

The Voice ID Settings help Alexa to better recognize your voice and accent. Giving access to the microphone and blue tooth are necessary to be able to talk to Alexa. The Alexa app will guide you through those steps.

If you have other devices in the same network, Alexa might want you to connect to those as well. This can be skipped and is not necessary to manage your creative icon 2.

*Tip: To be able to communicate with Alexa Hands-Free, without tapping the blue dot in the app before giving commands, enable handsfree in the Alexa App Settings menu (More/Settings/Alexa App Settings).*

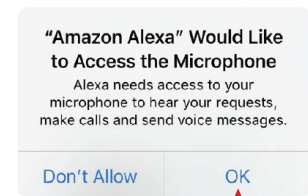


## Link mySewnet to Alexa

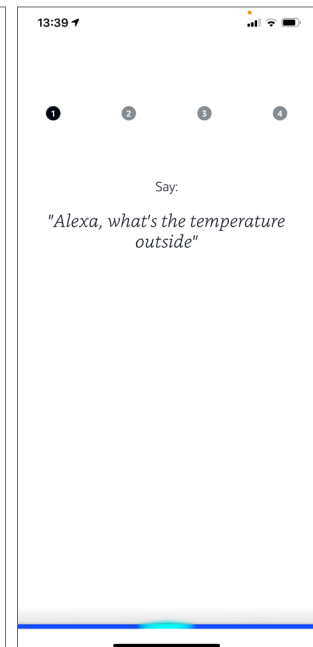
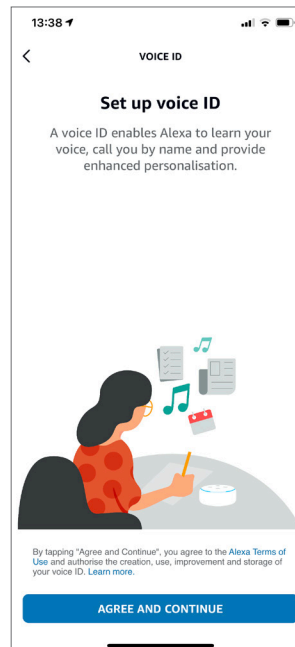
When you are logged in to mySewnet on your creative icon 2 and logged in to the Alexa app, make sure both accounts are using the same wifi network.

Now it is time to link your Alexa account to your mySewnet account. Here, the steps and screens shown might differ to the ones appearing on your device.

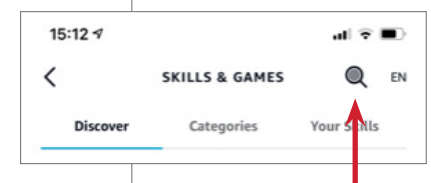
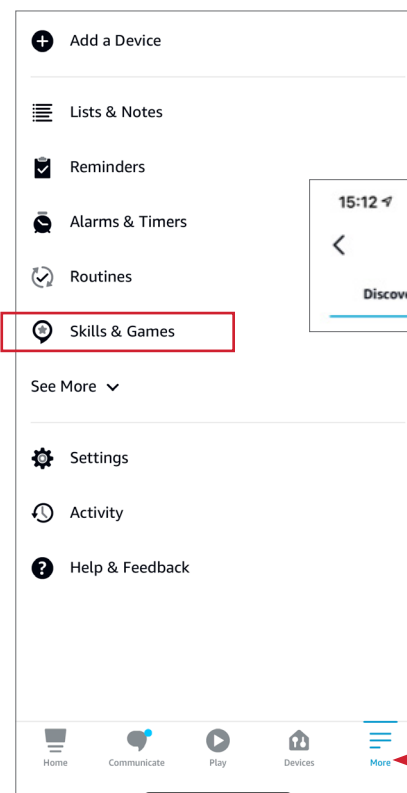
- Find "Skills & Games". They can be found on the Home Screen or under the "More" menu (depending on what device you have).
- Touch the magnifying glass in the top right and search "mySewnet".



Allow Alexa to use Bluetooth and to access the microphone

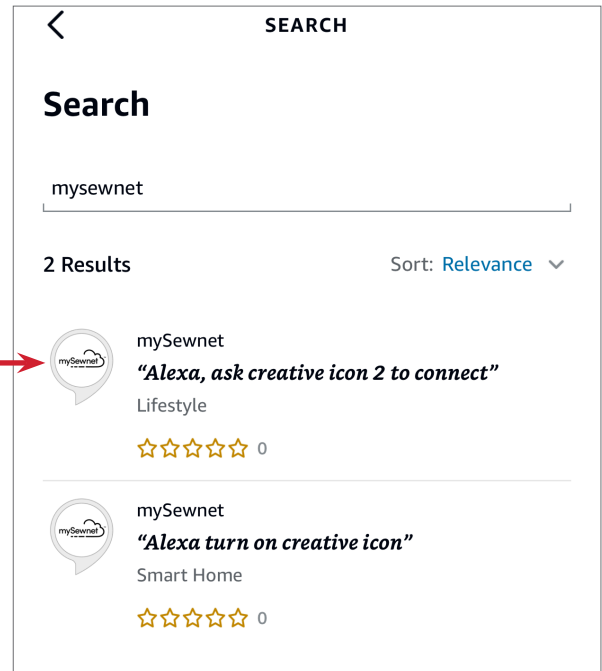


Repeat the phrases suggested by Alexa to set your Voice ID

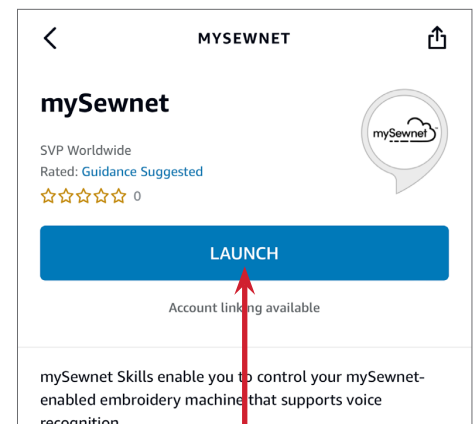
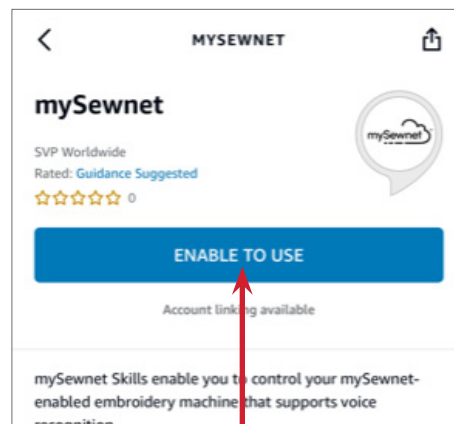


There are currently two mySewnet skills available (they will eventually be merged).

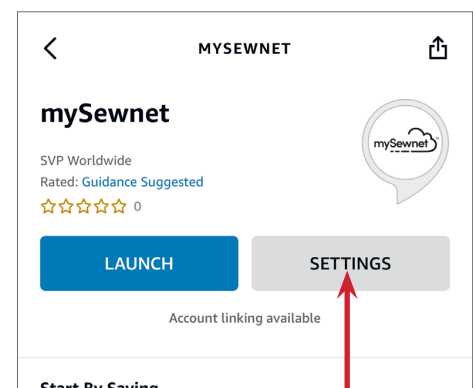
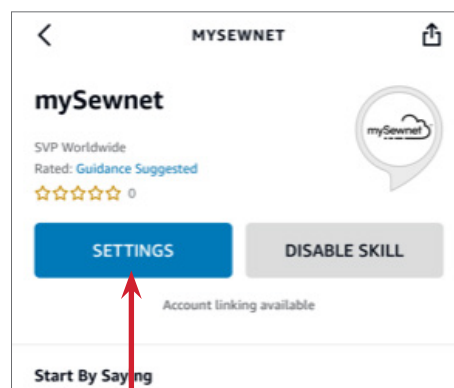
- Select the skill labeled "Lifestyle", with the sub headline "Alexa, ask creative icon 2 to connect"



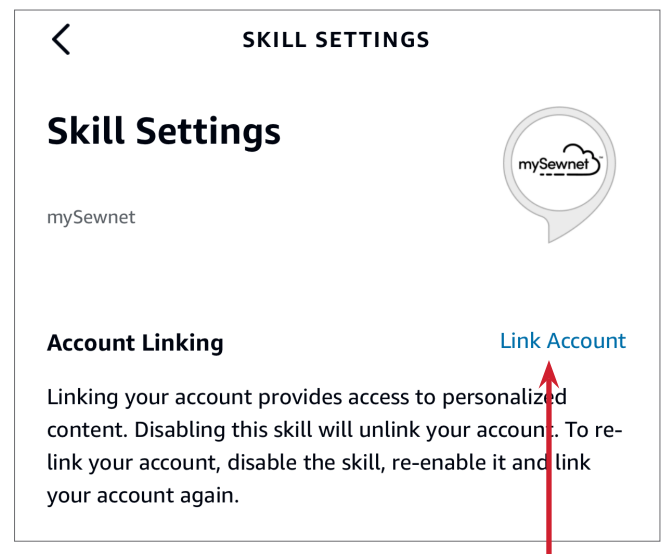
- Depending on your device, touch "LAUNCH" or "ENABLE TO USE".



- Touch "SETTINGS".



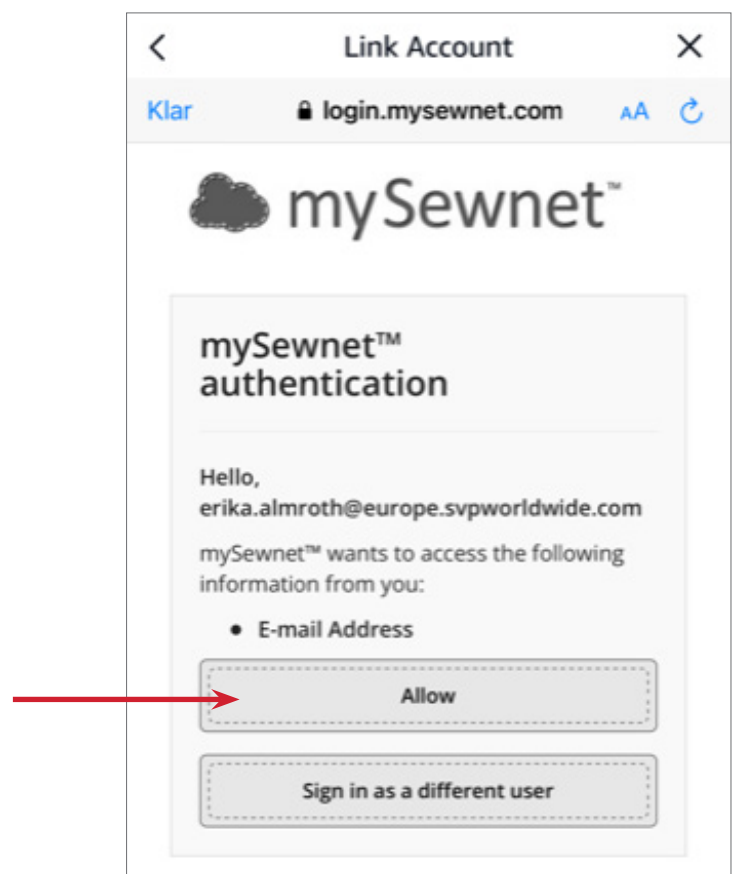
- Touch "Link Account".



Once the "Link Account" is touched, Alexa will ask mySewnet for access.

- Touch "Allow".

*Note: If you are not logged in to mySewnet, a mySewnet login screen are shown instead.*



When you get this screen you are ready to connect your machine.

- Touch "Close" and return to the Alexa Home screen.
- Say "Alexa, ask mySewnet to connect a machine".

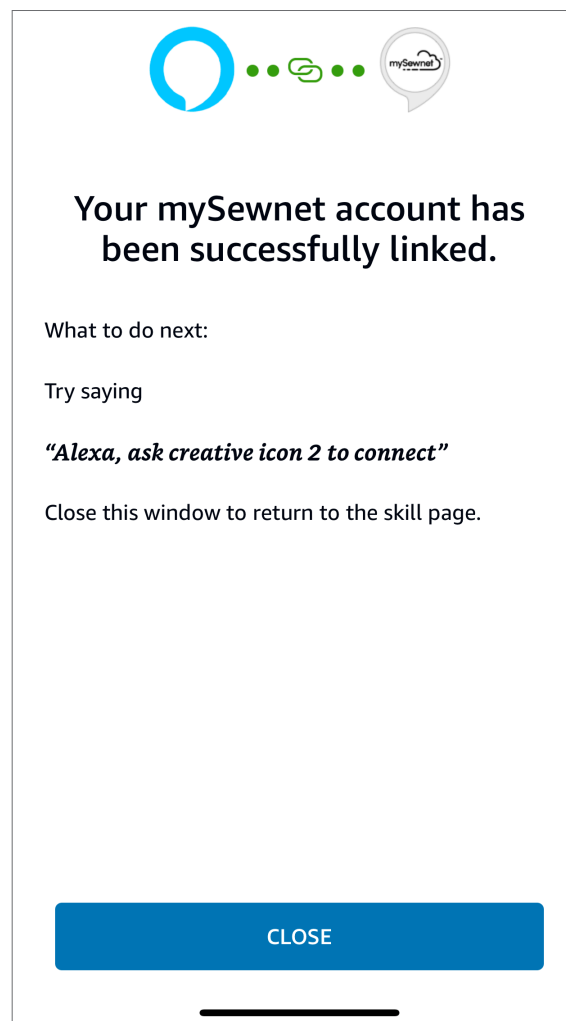
If your machine is already connected Alexa will respond and tell you how many machines are connected.

- Say "Alexa, ask creative icon 2 to connect".

Once Alexa confirms that your creative icon 2 is connected you are good to go.

In the section "How to Talk to Your creative icon 2", you can find examples of phrases and commands to use when communicating with your creative icon 2 sewing and embroidery machine.

The list of commands that can be used is growing continuously.



## How to Talk to Your creative icon 2

*Note: For your safety, only use Speech Recognition when you are within reach of your machine.*

Follow the below, to communicate as efficiently as possible with your machine:

- Make sure your device isn't muted.
- Speak clearly with a calm voice.
- Move your device away from walls, other speakers, or background noise.
- If your command is not executed, rephrase your question or command or make it more specific.
- *Be patient, your creative icon 2 sewing and embroidery machine is still learning!*

### Activate Speech Recognition

Do this before Speech Recognition can be used:

- Turn on your creative icon 2.
- Open the Alexa app (if not already open).
- Say: "Alexa, open creative icon 2". This makes Alexa active for about 30 seconds.

### Different Type Of Commands For Different Things

*The below commands can be used when creative icon 2 is "open" according to the above.*

You can search for tutorials, quick start guides and in the User's Guide, by using the phrase: **"Show me..."**

**"Show me how to wind the bobbin"**

**"Show me how to sew an invisible zipper"**

You can open stitch categories or search for embroidery designs by using the phrase: **"Show me..."**

**"Show me all butterfly embroideries"**

creative icon 2 will answer:

**"Please specify area to search for Butterflies: library, help or machine?"**

Say what you prefer: **"Library"**

You can load stitches or embroidery designs by using the phrase: **"Load..."**

**"Load a zigzag stitch"**

*If it has been more than 30 seconds since your previous command, you can instead use the phrase:*

**"Alexa, ask creative icon 2 to show me..."**

**"... how to wind the bobbin"**

**"... how to sew an invisible zipper"**

**"... all butterfly embroideries"**

**"Alexa, ask creative icon 2 to load..."**

**"... a zigzag stitch"**